

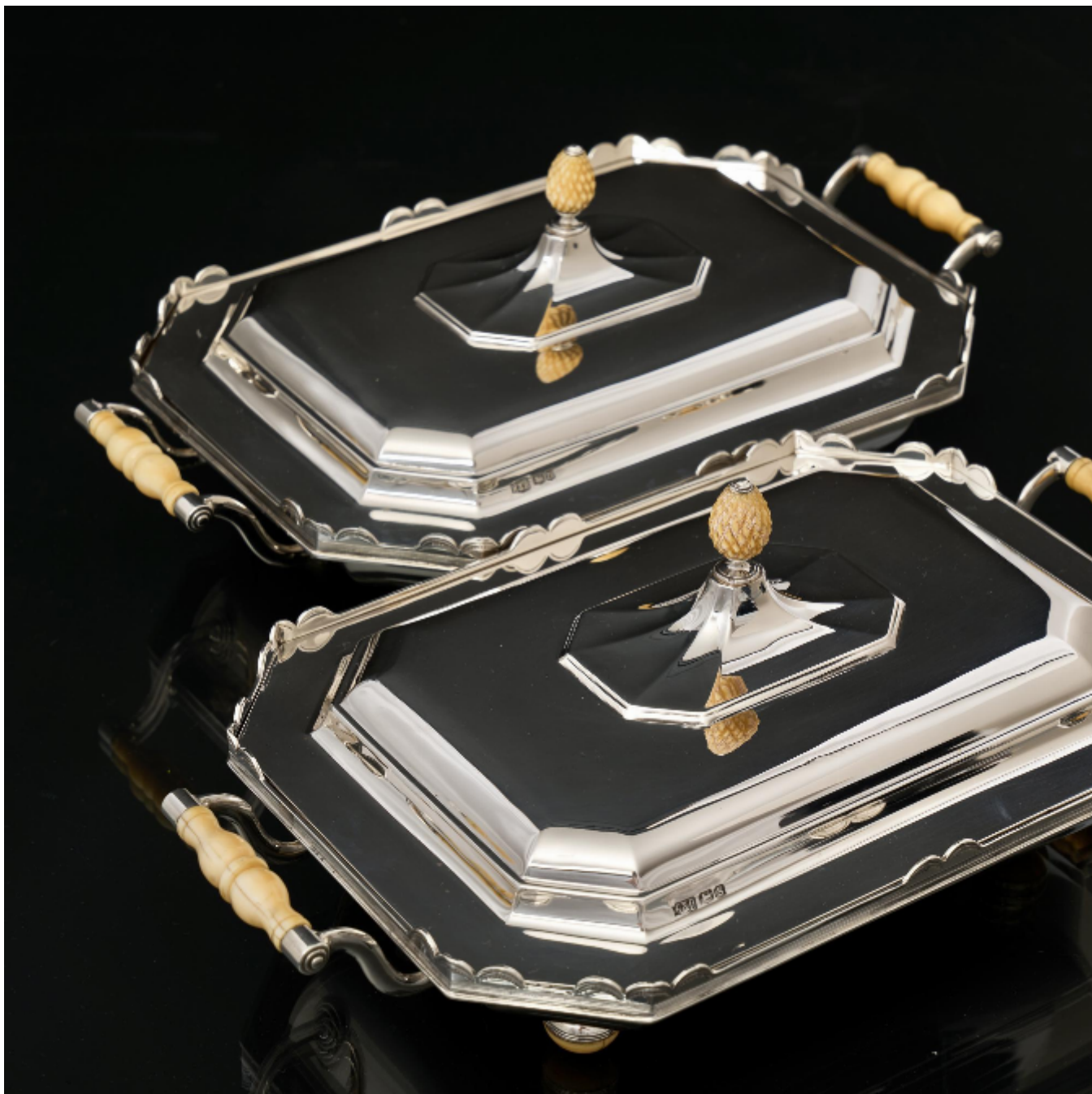
LANGFORDS

Antique & Contemporary Silver

Pair of Art Deco silver entrée dishes

Roberts & Belk

£9,800



REF: 8721

Height: 130 mm (5.12")

Width: 330 mm (12.99")

Depth: 190 mm (7.48")

Weight: 3399 g

Description

Pair of Art Deco style silver entrée dishes with hot water liners and stepped covers. The handles, finials and supports are ivory. The supports act as insulators, thereby protecting the surface from any heat transmitted from the dishes. As stylish but really practical pieces for your table or sideboard; they can be used to keep food hot or, if crushed ice is used in place of hot water, to keep food chilled during the summer months.

Length given includes the handles. The dishes' bodies are 265mm (10½") long.

Note: the pair were made five years apart by the same silversmith, Roberts & Belk, but match each other exactly in terms of size and shape.

Note: Under the rules of the UK government's Ivory Act 2018, this pair of entrée dishes qualifies for an ivory exemption certificate. If required, the ivory parts may be replicated and replaced with an ivory substitute at no additional cost.