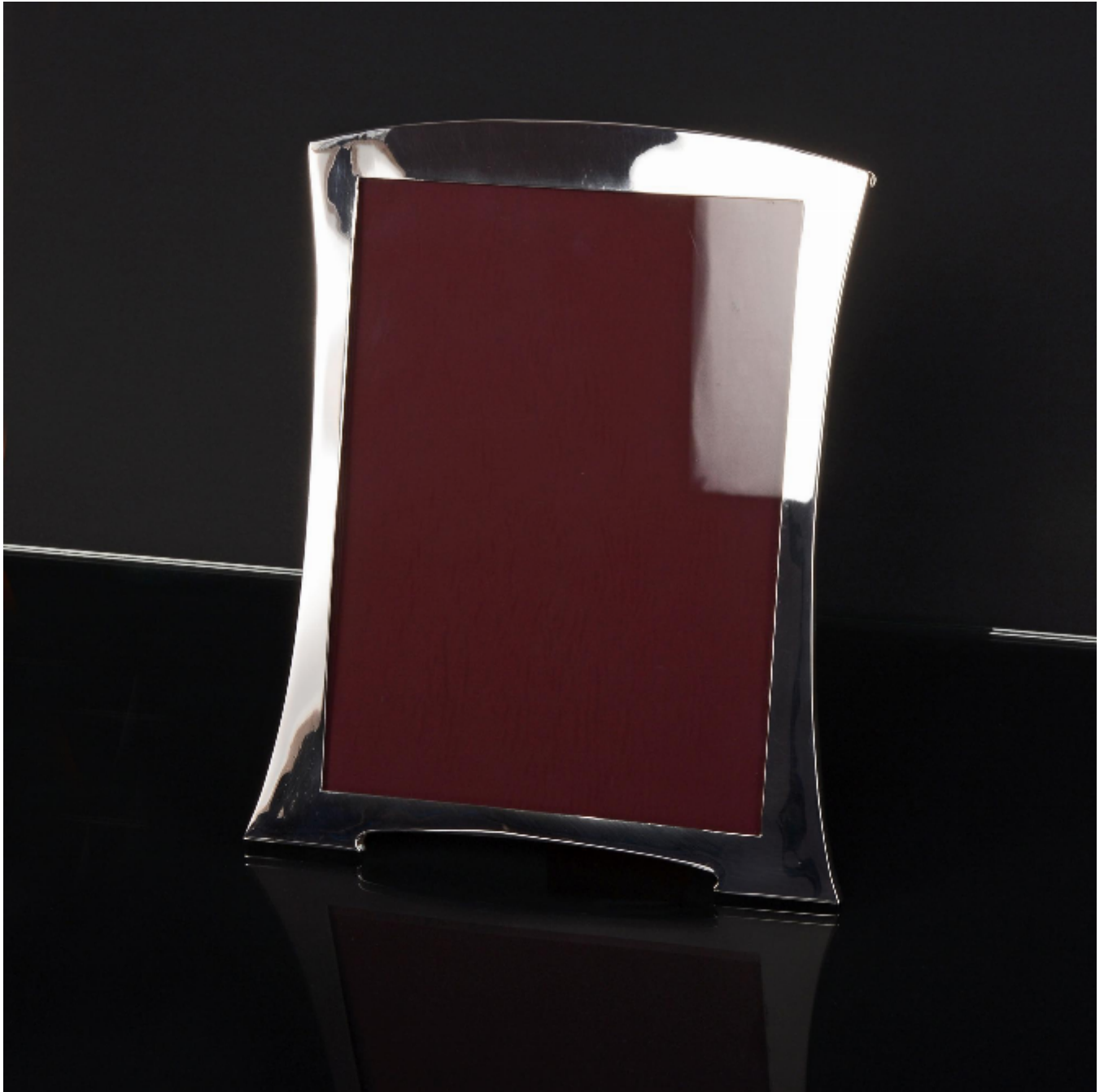


LANGFORDS

Antique & Contemporary Silver

Antique Art Deco silver photo frame
Mappin & Webb

£1,100



REF: 6211

Height: 310 mm (12.2")

Width: 240 mm (9.45")

Diameter: 190.43 mm (7.5")

Description

This is a most stylish handmade silver photograph frame designed in the Art Deco style, and fitted with its original wood frame and easel. The portrait aperture takes a photograph 260mm x 190mm (10¼" x 7½").

Art Deco was a popular design style in the 1920s and '30s characterised especially by sleek geometric or stylised forms. It represented luxury, glamour, exuberance, and faith in social and technological progress.