

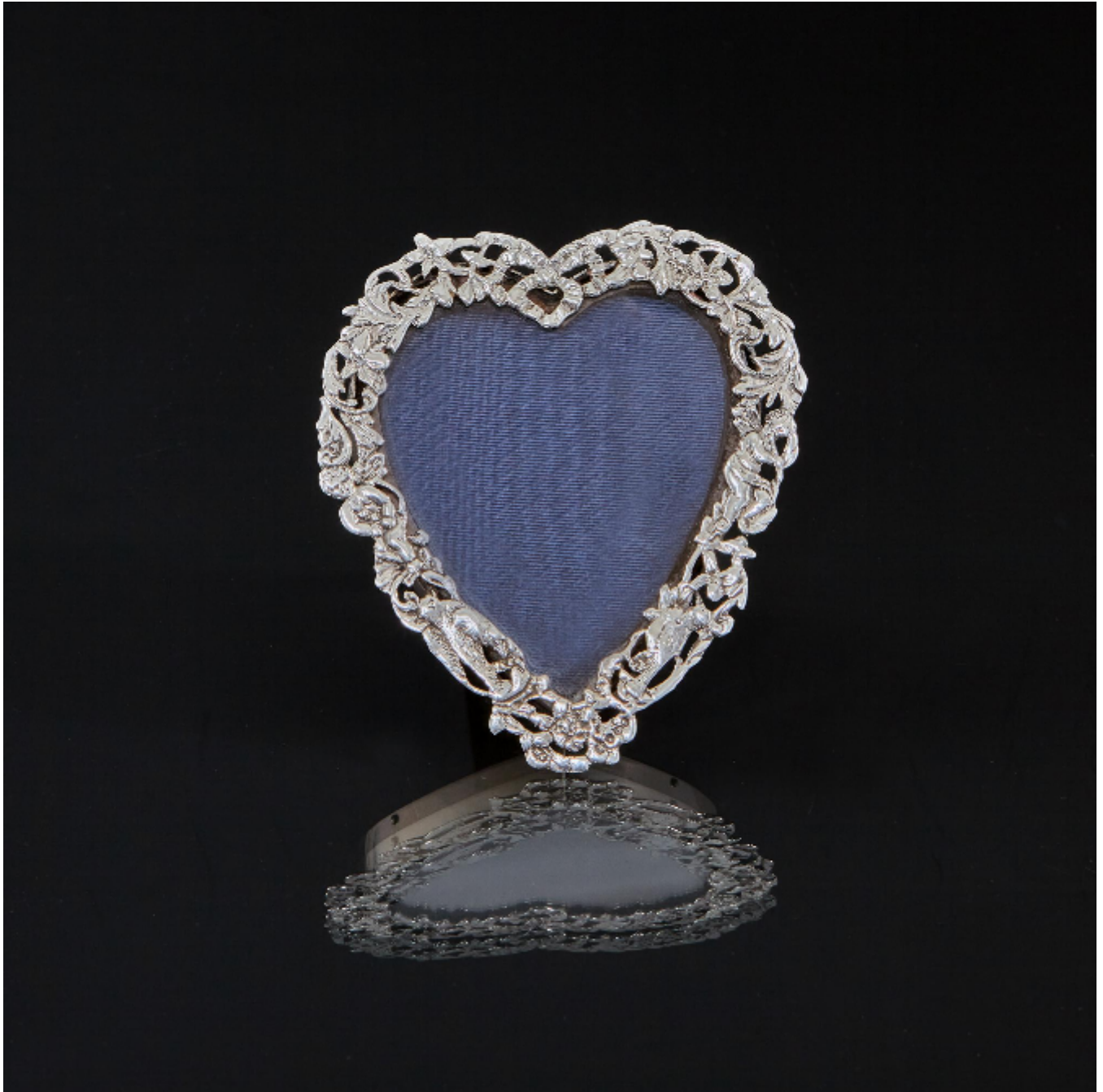
# LANGFORDS

Antique & Contemporary Silver

## Heart-shaped antique silver photo frame

William Comyns

£460



REF: 7159

Height: 100 mm (3.94")

Width: 95 mm (3.74")

## Description

Charming antique silver photograph frame with openwork cast fascia decorated with birds, flowers, ribbons and scrolls as well as puti (cherubs). The frame is fitted with a wooden back and easel.

This silver frame will hold a photograph approximately 70mm x 70mm (2¾" x 2¾")

The creation of the iconic heart shape to signify love was first reported at the end of the Middle Ages. It gained popularity in the 15th and 16th centuries and has featured widely used in decorative design throughout subsequent centuries, reaching a peak of deep significance in 18th and 19th century decorative silverware and jewellery.