

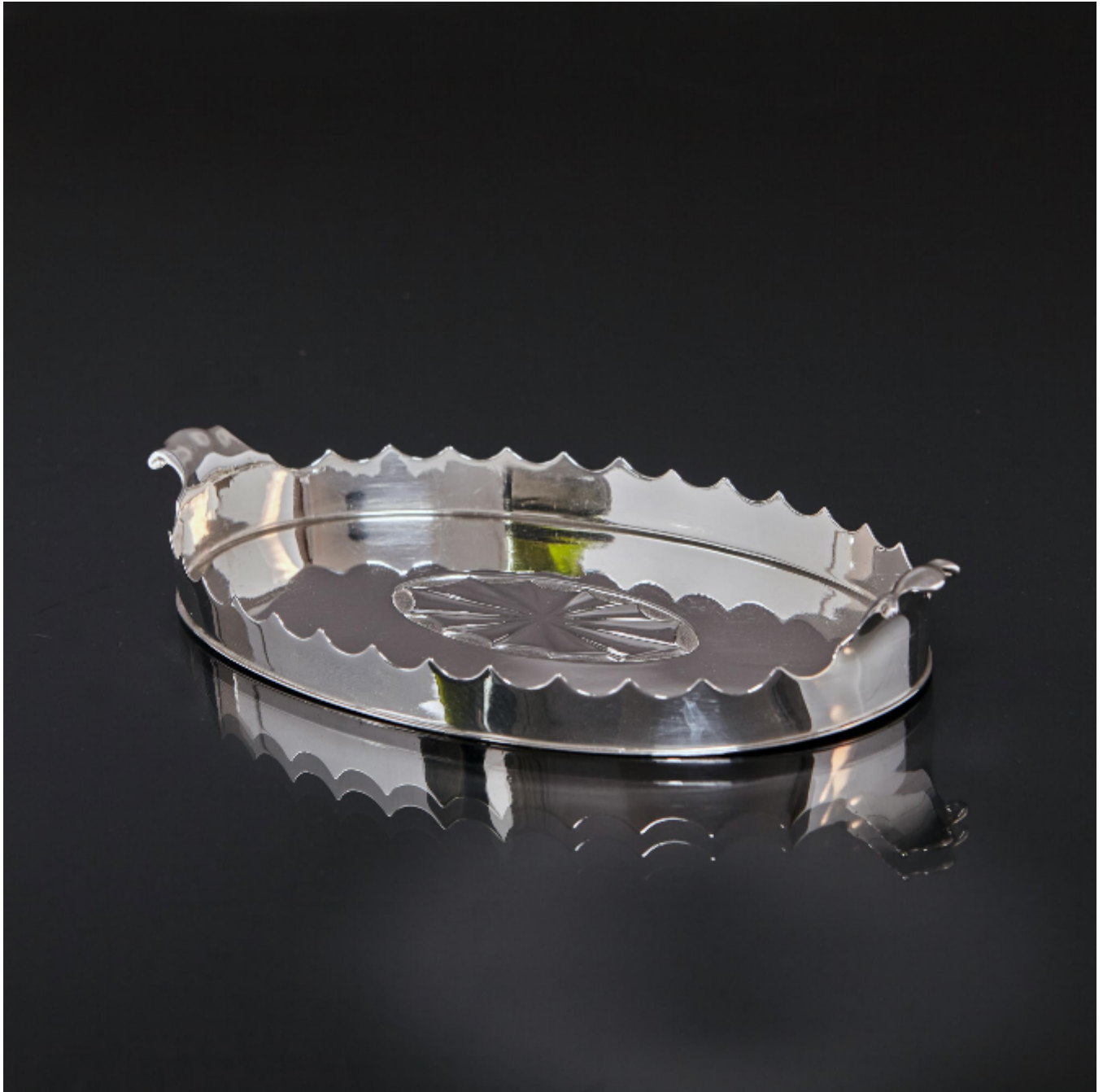
LANGFORDS

Antique & Contemporary Silver

Novelty miniature Sheraton-style silver tray

R H Halford & Sons

Sold



REF: 3621

Width: 155 mm (6.1")

Depth: 90 mm (3.54")

Weight: 112 g

Description

This antique Edwardian silver dresser tray, with its crisp wavy gallery border and hand chased central decoration, is both elegant and functional.

Sheraton was a late 18th century neoclassical English furniture style, in vogue c1785 - 1820, reflecting the work of English furniture designer Thomas Sheraton and inspired by the French Louis XVI style. Sheraton is known for its light elegant appearance and pieces featured simple, geometric shapes. Frequent motifs included swags, lyres, ribbons, fans, feathers, urns and flowers.